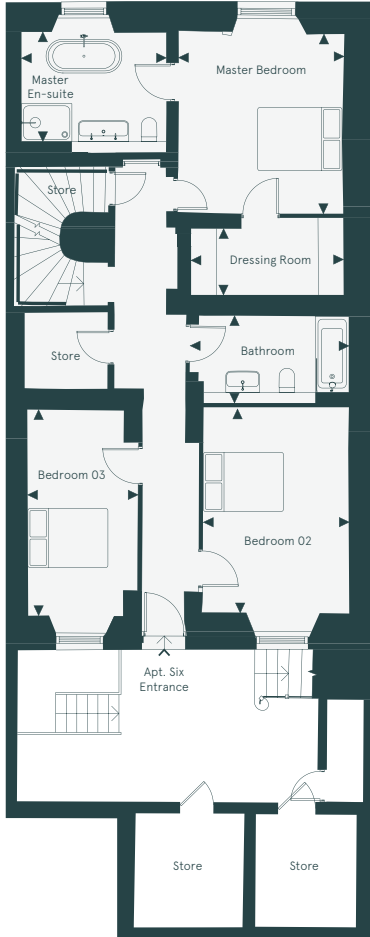
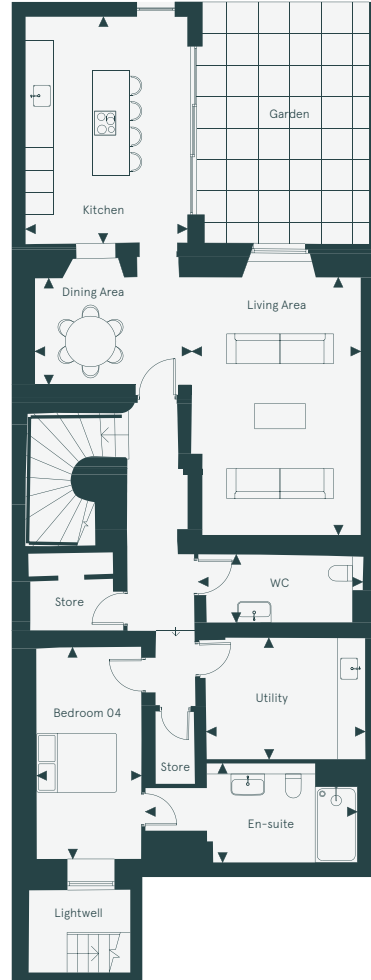


APARTMENT SIX

Lower Ground Floor



Garden



Four Bedroom
Lower Ground Floor & Garden

Kitchen	3.88 x 5.38m	(12'9" x 17'8")
Dining Area	3.72 x 2.53m	(12'3" x 8'4")
Living Area	3.97 x 6.11m	(13' x 20'1")
WC	3.90 x 1.62m	(12'10" x 5'4")
Utility	3.77 x 2.89m	(12'4" x 9'6")
Bedroom 04	2.49 x 5.07m	(8'2" x 16'8")
En-suite	5.03 x 2.35m	(16'6" x 7'9")
Master Bedroom	3.90 x 4.26m	(12'9" x 14'0")
Master En-suite	3.44 x 2.60m	(11'3" x 8'6")
Dressing Room	3.62 x 1.58m	(11'10" x 5'2")
Bathroom	3.78 x 2.07m	(12'5" x 6'10")
Bedroom 02	3.45 x 4.89m	(11'4" x 16'1")
Bedroom 03	2.62 x 4.88m	(8'7" x 16'0")
TOTAL	238.5m²	(2,567ft²)

LOCATION

